



www.FleetwoodRV.com

**35K** Options: 089, 096, 113, 126, 194, 220, 304, 470, 471, 580, 671, 833

**TOP FLOORPLAN FEATURES**

- Bath-and-a-Half
- Sleeps up to 6
- The Bounder Story
- Residential Refrigerator w/French Door and Icemaker
- Power Entry Step
- Bus-style Luggage Doors



OPT. 126 WASHER/ DRYER ALL-IN-ONE COMBO



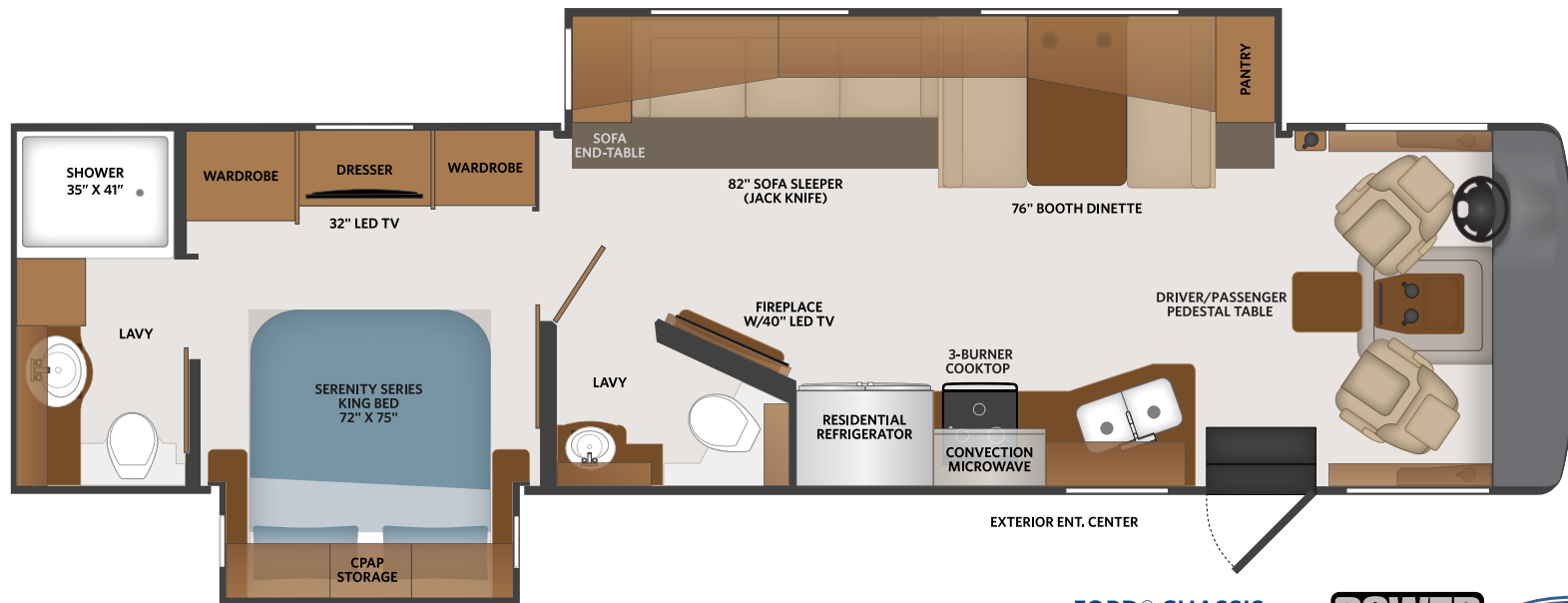
OPT. 194 78" THEATER SEATING



OPT. 833 FREE STANDING DINETTE W/ CRENZIA



OPT. 220 HIDE-A-LOFT™ DROP DOWN QUEEN BED



BOUNDER OPTIONS

089	Upgraded WiFi Package	194	Theater Seating Sofa	471	Steering Stabilizer System
096	KING® Universal Satellite System	220	Hide-A-Loft™ Drop Down Queen Bed	580	Collision Mitigation
113	Range -3 Burner Drop-in w/Oven	304	Solar Electrical Panel (265w)	671	Manual Power Cord Reel
126	Washer/Dryer — All in one combo	470	SumoSprings® - Front/Rear	833	Free Standing Dinette

OPT. 113 RANGE 3-BURNER DROP-IN W/OVEN



**FORD® CHASSIS**

Model: Ford®  
 Engine: 7.3L Triton V8  
 Transmission: Ford® 6-Speed, Automatic w/Overdrive  
 Alternator: 175 Amp  
 Torque: 468 lb.-ft. @ 3,000 RPM  
 Horsepower: 350HP @ 3,900 RPM



FLOORPLAN **35K**

20  
22

CLASS A GAS  
**BOUNDER**